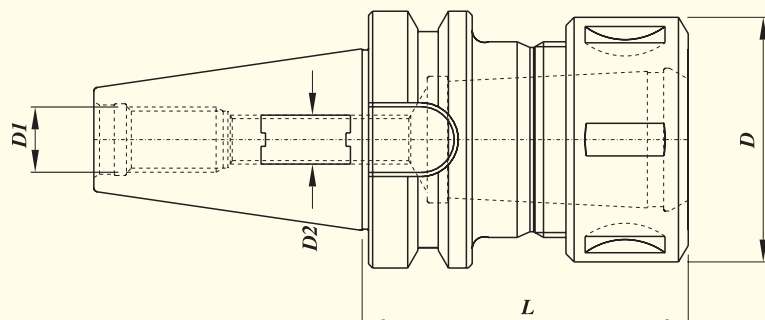


BT SHANK 'RDO' COLLET HOLDER WITHOUT COOLANT

BT A/ RDO
BT MAS 403

WITHOUT COOLANT
THROUGH FORM A



Maximum runout of the internal taper in relation to the external taper 0,005 mm

Collet Chuck Designation	Suitable for Collet	Collet Clamping Capacity	L	D1	D2	Nut		Spanner Designation
						D	Designation	
BT30 A RDO 25060	RDO 25	1,5 - 16	60	M 12	M 10 x 1	43	KM/RDO 25	HS 25
BT30 A RDO 35080	RDO 35	1,5 - 25	80	M 12	M 12 x 1	60	KM/RDO 35	HS 35
BT40 A RDO 25060	RDO 25	1,5 - 16	60	M 16	M 10 x 1	43	KM/RDO 25	HS 25
BT40 A RDO 35070	RDO 35	1,5 - 25	70	M 16	M 12 x 1	60	KM/RDO 35	HS 35
BT40 A RDO 44090	RDO 44	3,5 - 32	90	M 16	M 18 x 1	72	KM/RDO 44	HS 44
BT50 A RDO 35085	RDO 35	1,5 - 25	85	M 24	M 12 x 1	60	KM/RDO 35	HS 35
BT50 A RDO 44090	RDO 44	3,5 - 32	90	M 24	M 18 x 1	72	KM/RDO 44	HS 44

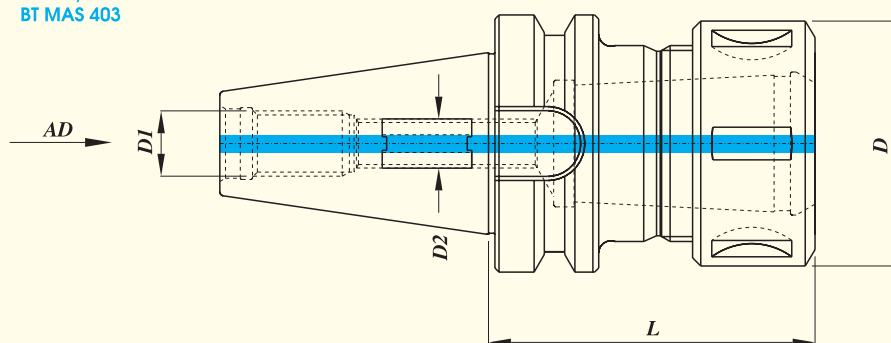
Ordering Example :-
KTA BT A 40 RDO 25060 Without coolant /Qty. - 2 Nos.

For Nut
refer page no. 24

BT SHANK 'RDO' COLLET HOLDER WITH COOLANT THROUGH CENTER

BT AD / RDO
BT MAS 403

WITH COOLANT THROUGH
THE CENTRE FORM AD



Maximum runout of the internal taper in relation to the external taper 0,005 mm

Collet Chuck Designation	Suitable for Collet	Collet Clamping Capacity	L	D1	D2	Nut		Spanner Designation
						D	Designation	
BT30 AD RDO 25060	RDO 25	1,5 - 16	60	M 12	M 10 x 1	43	KM/RDO 25	HS 25
BT30 AD RDO 35080	RDO 35	1,5 - 25	80	M 12	M 12 x 1	60	KM/RDO 35	HS 35
BT40 AD RDO 25060	RDO 25	1,5 - 16	60	M 12	M 10 x 1	43	KM/RDO 25	HS 35
BT40 AD RDO 35070	RDO 35	1,5 - 25	70	M 16	M 12 x 1	60	KM/RDO 35	HS 35
BT40 AD RDO 44090	RDO 44	3,5 - 32	90	M 16	M 18 x 1	72	KM/RDO 44	HS 44
BT50 AD RDO 35085	RDO 35	1,5 - 25	85	M 24	M 12 x 1	60	KM/RDO 35	HS 35
BT50 AD RDO 44090	RDO 44	3,5 - 32	90	M 24	M 18 x 1	72	KM/RDO 44	HS 44

Ordering Example :-
KTA BT 30 AD RDO 25060 With coolant through Center / Qty. - 2 Nos.

For Nut
refer page no. 24